



NOTICE OF RACE
Open Dutch Championship
Sprint
O-Jol class
organized by ZV Belterwiede
under the auspices of the RNWA
from 1 to 2 October (inclusive) 2022
location: Belterweide, Wanneperveen

The notation '[NP]' in a rule means that a boat may not protest another boat for breaking that rule. This changes RRS 60.1(a).

1 RULES

- 1.1* The event is governed by the rules as defined in *The Racing Rules of Sailing (RRS)*. The Prescriptions of the RNWA can be found at <https://www.sailing.org/inside-world-sailing/rules-regulations/racing-rules-of-sailing/>
- 1.2* The 'Rules for (Open) Championships Sailing, Windsurfing and Kiteboarding' (available at <reglement-voor-kampioenschappen-20191101-v5-docx.pdf> (<watersportverbond.nl>)) will apply.
- 1.3 The changes in the racing rules will appear in full in the sailing instructions. The sailing instructions may change other rules as well
- 1.4 Not applicable
- 1.5 If there is a conflict between languages the text in the English language will take precedence.
- 1.6* Every person on board who has his domicile in the Netherlands shall have the appropriate license.
- 1.7 Not applicable
- 1.8 Not applicable
- 1.9 Not applicable

2 SAILING INSTRUCTIONS

- 2.1 The sailing instructions will be available after 12 september on the website of the Class-Organization at www.olympiajol.nl and the organizing authority at www.zvbelterwiede.nl.

3 COMMUNICATION

- 3.1 Notices to competitors will be posted on the official noticeboard located near the regatta office.
- 3.2 [DP] From the first warning signal until the end of the last race of the day, except in an emergency, a boat shall not make voice or data transmissions and shall not receive voice or data communication that is not available to all boats.
- 3.3 Not applicable
- 3.4 Not applicable



4* ELIGIBILITY AND ENTRY

- 4.1 The event is open to all boats of the O-Jol class.
- 4.2 Not applicable
- 4.3 Boats may enter the event by registering online and transferring the required fee before September 23rd at www.Olympiajol.nl.
The required fee shall be transferred to the following bank account:
IBAN NL 13 KNAB 0257008446, in the name of M.Versluis and/or J.Lijkendijk. Please state ONK Sprint 2022, class and sail number.
In case of cancelling the championship, the transferred fee will be refunded minus any made costs.
- 4.4 Late entries will not be accepted.
- 4.5 To be considered an entry in the event, a boat shall complete all registration requirements and pay all fees.
- 4.6 Not applicable
- 4.7 Not applicable

5 FEES

- 5.1 The entry fee amounts to € 50,= for all boats.

6 CREW LIMITATIONS

- 6.1 The following crew limitations apply: replacement of the responsible person is not allowed during the series of races.
- 6.2 Not applicable

7 ADVERTISING

- 7.1 Boats may be required to display advertising chosen and supplied by the organizing authority.
- 7.2 Not applicable

8 QUALIFYING SERIES AND FINAL SERIES

- 8.1 When on the closing day September 23rd, 30 or more boats have entered, the event will consist of a qualifying series and a final series.
The qualifying races are on October 1st.
- 8.2 Addendum K of the template standard Sailing Instructions of the RNWA applies.

9 SCHEDULE

- 9.1 Registration:

Date	From	To
<i>October 1st</i>	<i>8:30 AM</i>	<i>10:00 AM</i>

- 9.2 Not applicable



9.3* Dates of racing:

<i>Date</i>	<i>O-Jol Class</i>	<i>First Start</i>
<i>October 1st</i>	<i>Racing (qualifying)</i>	<i>11:00 AM</i>
<i>October 2nd</i>	<i>Racing (final)</i>	<i>9:30 AM</i>

9.4 Number of races:

<i>Class</i>	<i>Day</i>	<i>Races per day Scheduled</i>
<i>O-Jol</i>	<i>October 1st</i>	<i>9</i>
<i>O-Jol</i>	<i>October 2nd</i>	<i>8</i>

During the event there will be no pause in the harbour. All participants shall bring their own food and drink, to be consumed on the water in between the races.

9.5* Races will be started as follows:

Signal	Minutes before start	Sound Signal	Visual Signal
Warning signal	3	One	W-flag + Class board
Preparatory signal	2	One	Black flag
One-Minute signal	1	One	Remove black flag
Starting signal	0	One	Remove W-vlag

Rule 30.2 will apply for all starts.

The scheduled time of the warning signal on October 1st is 10:57 AM and on October 2nd 9:27 AM.

9.6* On the last day of the regatta no warning signal will be made after 15:00 hrs.

10 EQUIPMENT INSPECTION

10.1 Each boat shall produce or verify a valid measurement certificate.

10.2 Not applicable

10.3 Boats may be inspected at any time.

10.4 Not applicable

10.5 [DP] Boats shall also comply with RRS 78.1.

11 Not applicable

12 VENUE

12.1 The race office is located at the following address: Veneweg 249, 7946 LV, Wanneperveen. Phone: + 31 625376921 (only during event)

12.2 NoR Addendum A shows the plan of the event venue and the location of the racing areas.

12.3 The organizing authority reserves the right to, in consultation with the class-organization, to use another course and/or to move the racing area in case of unforeseen circumstances.



13 COURSES

- 13.1 The diagrams in Attachment B show the course, including the approximate angles between legs, the order in which marks are to be passed, and the side on which each mark is to be left.

14 PENALTY SYSTEM

- 14.1 RRS 44.1 will apply.

- 14.2 RRS 70.5 will apply.

15 SCORING

- 15.1 Not applicable

- 15.2* 8 races are required to be completed to constitute a championship.

- 15.3 (a) When 8, 9 or 10 races have been completed, a boat's series score will be the total of her race scores excluding her worst score.
(b) When 11 or more races have been completed, a boat's series score will be the total of her race scores excluding her two worst scores.

- 15.4 Not applicable

- 15.5 RRS 90.3(e) applies.

16 [DP] SUPPORT PERSON VESSELS

- 16.1 Support person vessels shall produce or verify a valid navigation license.

17 CHARTERED OR LOANED BOATS

- 17.1 Not applicable

18 [DP] BERTHING

- 18.1 Boats will not be assigned to places in the harbour, responsible persons must however strictly follow the instructions given by the harbour staff. This also applies to the places of the trailers, campers etc.

19 [DP] HAUL-OUT RESTRICTIONS

- 19.1 Not applicable

20 [DP] DIVING EQUIPMENT AND PLASTIC POOLS

- 20.1 Not applicable

- 20.2 Not applicable

21 DATA PROTECTION

- 21.1 By participating in this event, competitors automatically grant to the organizing authority and the event sponsors the right, in perpetuity, to make, use, and show, at their discretion, any



photography, audio and video recordings, and other reproductions of them made at the venue or on the water from the time of their arrival at the venue, until their final departure, without compensation.

22 RISK STATEMENT

- 22.1** RRS 3 states: 'The responsibility for a boat's decision to participate in a race or to continue to race is hers alone.' By participating in this event each competitor agrees and acknowledges that sailing is a potentially dangerous activity with inherent risks. These risks include strong winds and rough seas, sudden changes in weather, failure of equipment, boat handling errors, poor seamanship by other boats, loss of balance on an unstable platform and fatigue resulting in increased risk of injury. Inherent in the sport of sailing is the risk of permanent, catastrophic injury or death by drowning, trauma, hypothermia or other causes.
- 22.2** The organizing authority will not accept any liability for material damage or personal injury or death sustained in conjunction with or prior to, during, or after the regatta.

23 INSURANCE

- 23.1** Each participating boat shall be insured with valid third-party liability insurance with a minimum cover of Euro 1.500.000 or the equivalent per incident.

24* PRIZES

- 24.1** The crew of the winning boat will be given the title of Dutch Champion. The RNWA supplies for the winning boat or team a blue pennant and a medal for every member of the crew of the first three boats or crews (there will be no extra medals available for changes in the crew during the event).

The winner in the Gold fleet will be given the Olympia-jol Class Challenge Trophy

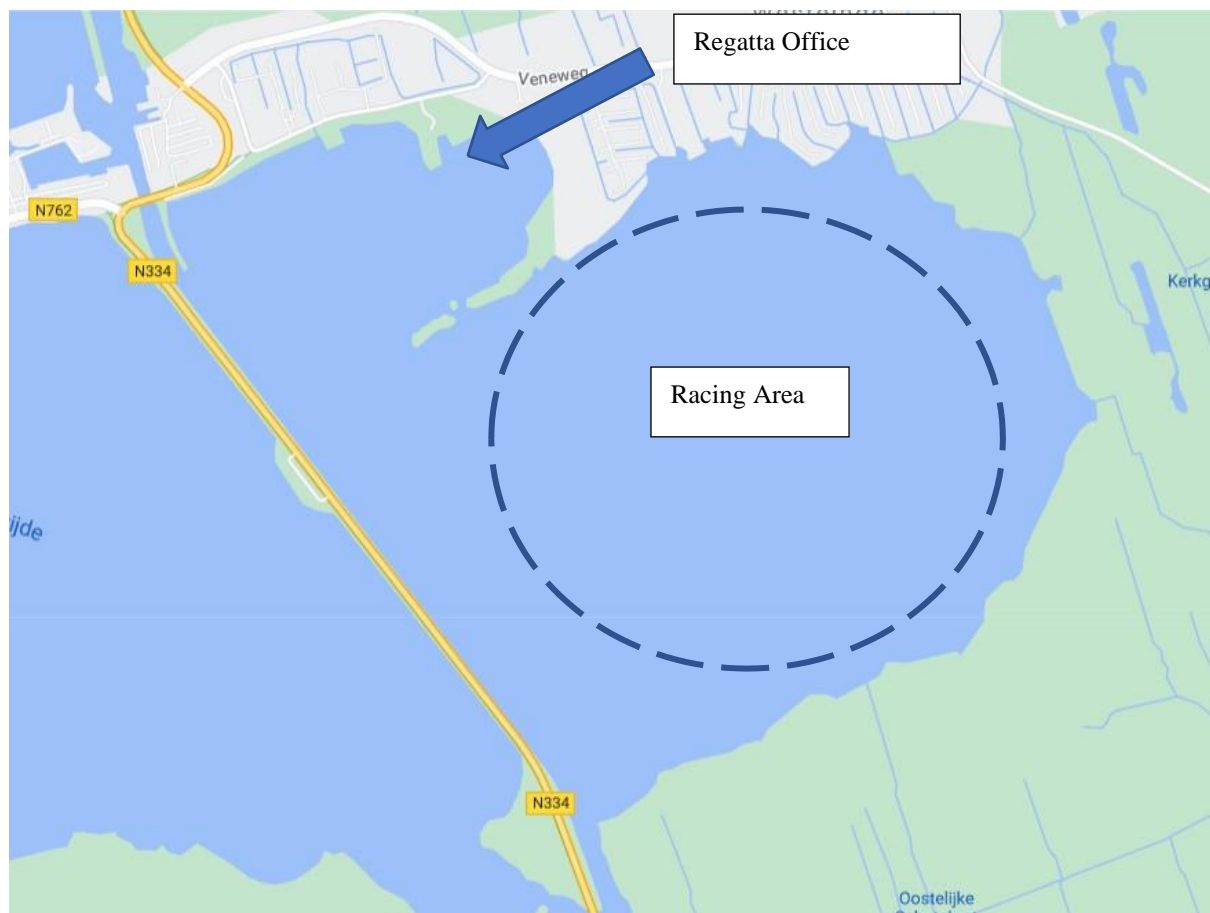
The first three boats in the Gold-, Silver- and Bronze fleet will be given prizes as well.

25 FURTHER INFORMATION

- 25.1** For further information be advised to follow the websites of the Class Organization and the Organizing Authority: www.olympiajol.nl and www.zvbelterwiede.nl.



Addendum **A**: the map of the event venue and the location of the racing area





Addendum B: the courses

